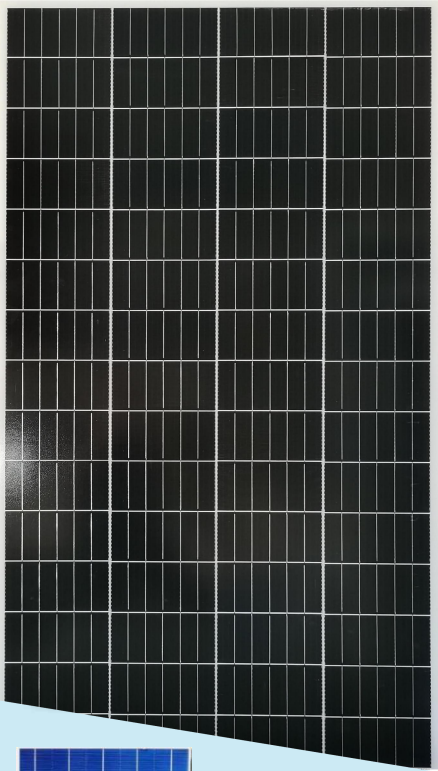


## HZS350M-72

### MONOCRYSTALLINE SOLAR MODULE

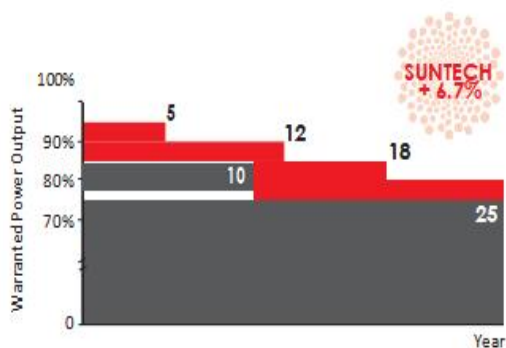


**Trust Hangzhou Solar photoelectricity to Deliver Reliable Performance Over Time**



Reliable IP67 Rated Junction Box

Industry-leading Warranty based on nominal power



### Feature



#### Hangzhou Solar current sorting process

System output maximized by reducing mismatch losses upto 2% with modules sorted & packaged by amperage



#### High module conversion efficiency

Module efficiency up to 19.54% achieved through advanced cell technology and manufacturing capabilities



#### Self-cleaning & anti-reflective

Higher module efficiency from anti-reflective, hydrophobic layer with higher light absorption and minimal surface dust



#### Excellent weak light performance

Excellent performance under low light conditions



#### Extended wind and snow load tests

Module certified to withstand extreme wind (3800 Pascal) and snow loads (5400 Pascal)



#### Positive tolerance

Guaranteed positive tolerance of up to 5% delivers higher outputs reliably



#### Maximize customer benefits

Maximize the benefits of end customers

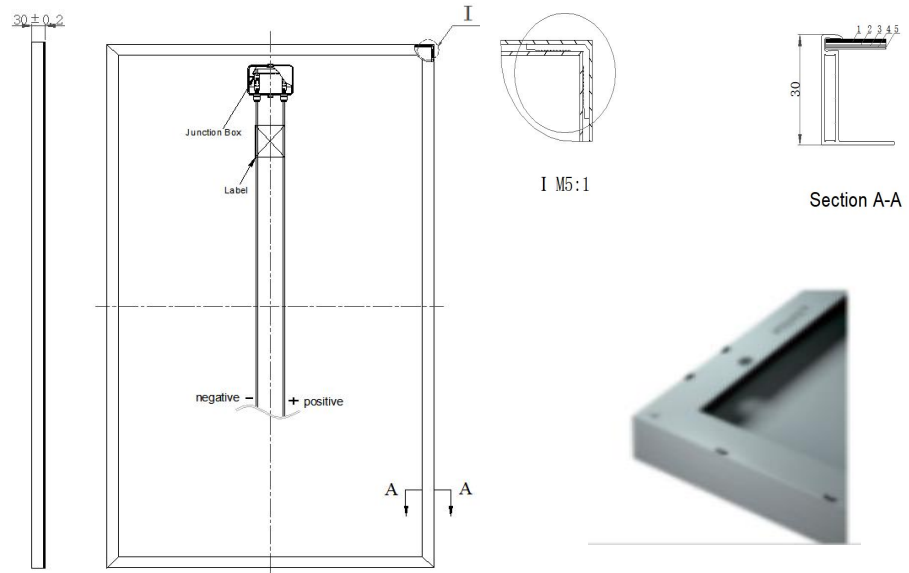
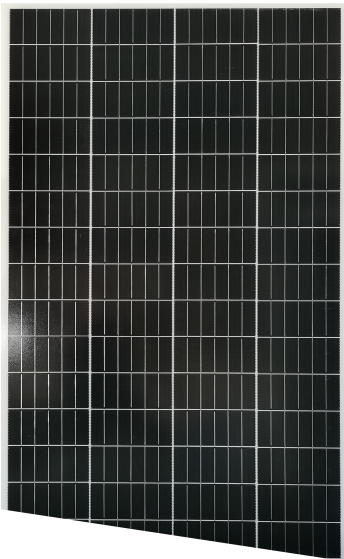


#### Strict quality control

Very strict quality control process and introduction of lean production mode



## Engineering drawings.



## Mechanical Characteristics

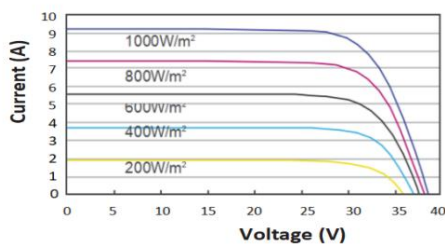
Solar Cell	Monocrystalline silicon 210× 105mm
No. of Cells	72 (4 × 18)
Dimensions	1990 ×900 ×30mm
Weight	18.5kg
Front Glass	3.2 mm tempered glass
Frame	Anodized aluminium alloy

## Temperature Characteristics

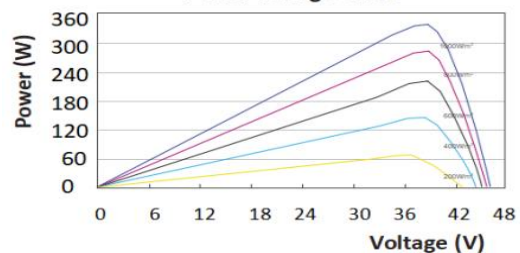
Nominal Operating Cell Temperature	45±2°C
Temperature Coefficient of Pmax	-0.40 %/°C
Temperature Coefficient of Voc	-0.31 %/°C
Temperature Coefficient of Isc	0.051 %/°C

## I-V Curves of pv module

Current-Voltage Curve



Power-Voltage Curve



## Electrical Characteristics

STC	HZS350M-72	HZS360M-72
Maximum Power at STC (Pmax)	350W	360W
Optimum Operating Voltage (Vmp)	38.5V	38.9V
Optimum Operating Current (Imp)	9.10A	9.26A
Open Circuit Voltage (Voc)	46.20V	46.68V
Short Circuit Current (Isc)	9.74A	9.91A
Module Efficiency	19.54%	20.10%
Operating Module Temperature	-40 °C to +85 °C	
Maximum System Voltage	1500 V DC (IEC)	
Power Tolerance	0/+5 %	

STC: Irradiance 1000 W/m<sup>2</sup>, module temperature 25 °C, AM=1.5;

